

PRODUCT RANGE

NON CONTACT RISING STEM BALL VALVES



1" ~ 36" (piggable)  
150 ~ 2500#  
-196°C ~ 538°C

On / Off metal-to-metal ball valve for extreme conditions

AXIAL FLOW VALVES



1" ~ 48"  
150 ~ 2500#  
-196°C ~ 250°C (538°C)

This series is designed for quick operation and tight shut off

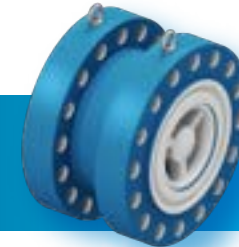
DOUBLE BLOCK AND BLEED PLUG VALVES



1" ~ 48" (piggable)  
150 ~ 2500#  
-196°C ~ 250°C

On / Off non-lubricated plug valve with provable zero leakage

AXIAL CHECK VALVES



1" ~ 36" (piggable)  
150 ~ 2500#  
-196°C ~ 538°C

Effective response under various flow deceleration conditions

BUTTERFLY VALVES



3" ~ 48"  
150 ~ 1500#  
-196°C ~ 250°C (538°C)

Our design provides repeatable long-lasting zero leakage shut off

SURGE RELIEF AXIAL FLOW VALVES



1" ~ 24"  
150 ~ 2500#  
-196°C ~ 250°C (538°C)

This valve introduces special trim and proven flow control



## FOUR WAY DIVERTER VALVES



1" ~ 24"  
150 ~ 900#  
-196°C ~ 250°C

Used for diverting process flow in two separate directions

## GATE VALVES



1/4" ~ 30" (piggyback)  
150 ~ 2500#  
-196°C ~ 300°C

High performance with soft seat and zero leakage

## ANGLE VALVES



1" ~ 48"  
150 ~ 2500#  
-196°C ~ 538°C

Choke / control, compact design, low friction operation mechanism

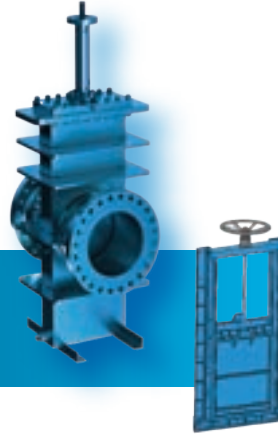
## GLOBE CONTROL VALVES



1/4" ~ 24"  
150 ~ 2500#  
-196°C ~ 300°C

Special design for high pressure control, wide variety of applications

## SLAB & SLUICE GATE VALVES



2" ~ 36" (slab valve)  
12" ~ 42" (sluice valve)  
150 ~ 900#  
-196°C ~ 593°C (slab)  
-40°F ~ 2000°F (sluice)

Suitable for all types of process fluids under high pressure and temperature

## CHECK VALVES



1/4" ~ 30" (piggyback)  
150 ~ 2500#  
-196°C ~ 300°C

Open with forward flow and close against reverse flow

## BALL VALVES



1" ~ 48" (piggyback)  
150 ~ 2500#  
-196°C ~ 300°C

On / Off low operating torque, ease of operation

## CONTACT US

[sales@controlseal.com](mailto:sales@controlseal.com)  
[marketing@controlseal.com](mailto:marketing@controlseal.com)  
T: + 971 562 148 800  
T: + 31 649 914 899  
T: +91 74182 38432

## LUBRICATED PLUG VALVES



1/2" ~ 36" (piggyback)  
150 ~ 2500#  
-196°C ~ 593°C

For shut off, throttling and diverting flow for extreme conditions